

REVISED FOR AUGUST 2011 GUIDELINES

Sample calculation of plantable area and turf area required:

The plantable area consists of the entire front yard, minus the actual driveway and the sidewalk adjacent to the curb. When doing the calculation of plantable area, do not deduct for mailboxes, plants and bushes, or walkways to the front door or back yard.

The front yard is defined by the City as, "That part of a lot between the front lot line and the front facades of the principal building on the lot, and extended to both side lot lines."

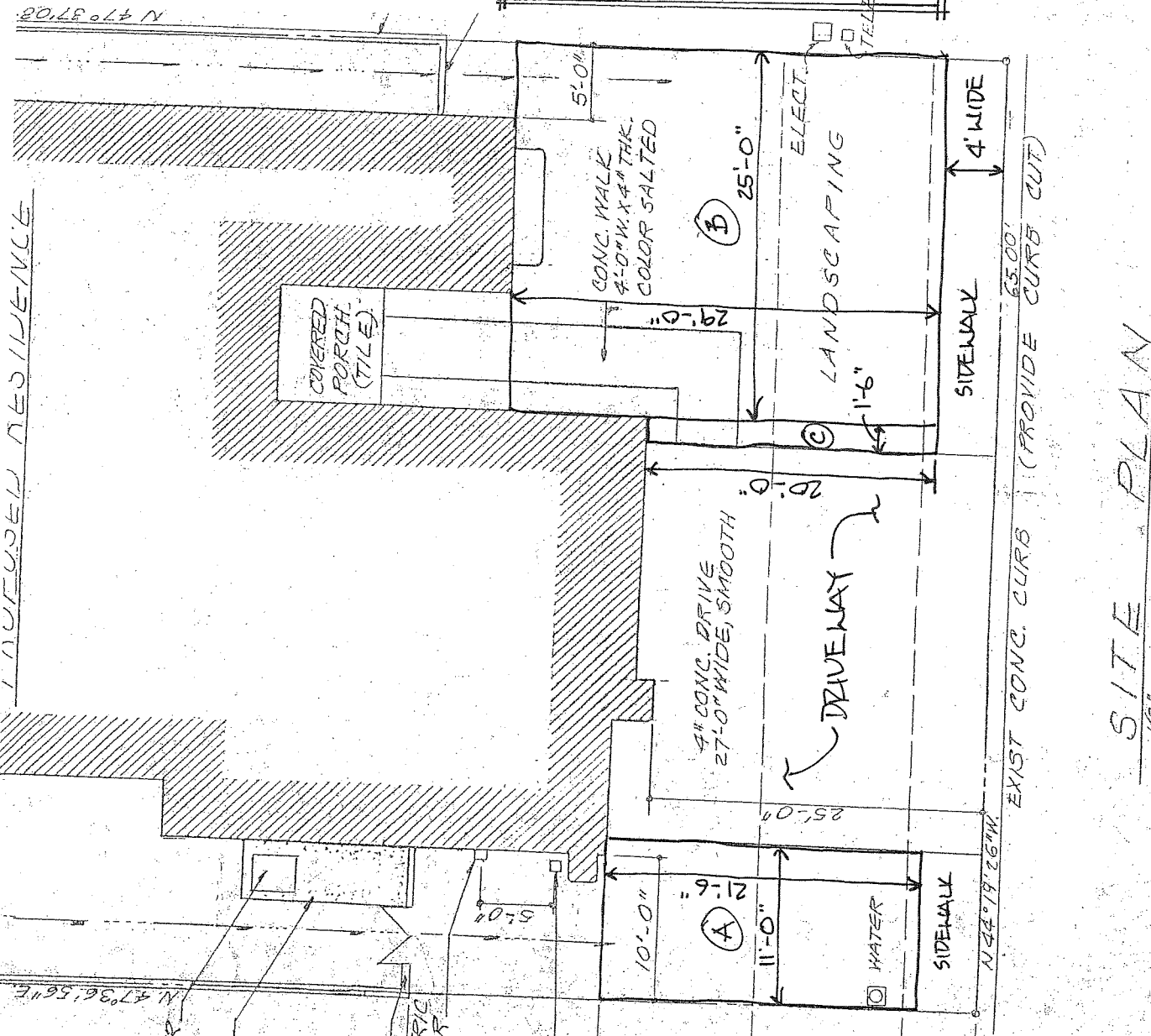
TOTAL PLANTABLE AREA

- A) $11'-0" \times 21'-6" = 236.5 \text{ FT}^2$
- B) $25'-0" \times 29'-0" = 725.0 \text{ FT}^2$
- C) $1'-6" \times 20'-0" = 30.0 \text{ FT}^2$

TOTAL 991.5 FT²

TURF REQUIRED:

$25\% \times 991.5 =$
248 FT²



SITE PLAN

1/8"